



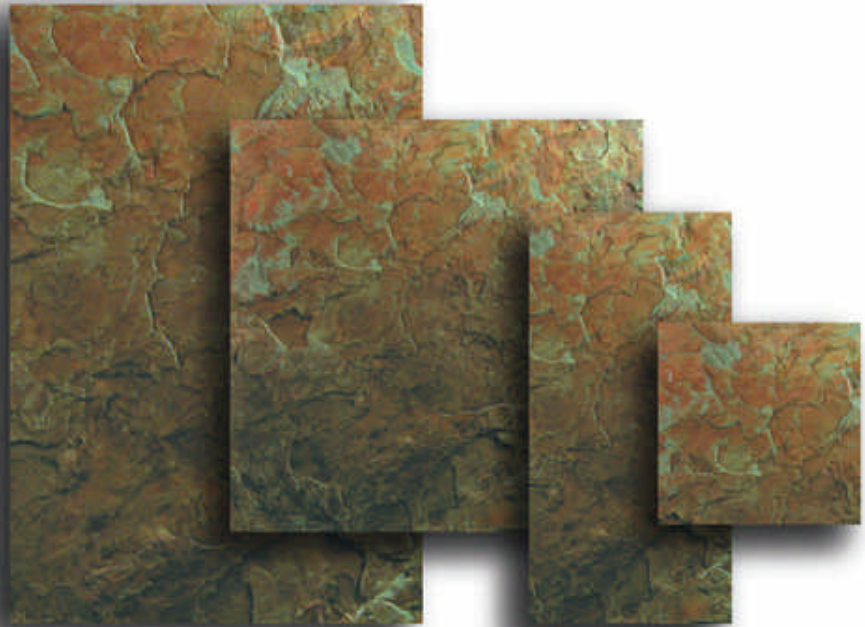
Our slate is precision gauged to ensure that each piece has a uniform thickness of three-eighths of an inch (3/8") making it easy to set both the flooring and wall cladding on almost any sub-surface that has been properly prepared with standard, popular setting adhesives.

Pre-sealed At The Factory For Faster Installation

In addition to uniform thickness, International Slate & Stone offers factory-applied presealing as an option for ten cents a square foot. Having the sealant in place in advance speeds grout release and cleanup, saving valuable time and labor. We'll continue to bring innovative and beautiful products to the marketplace for every building and construction need.

International Slate & Stone's new line of flooring and wall cladding is available in eight different colors and four different sizes. The diversity of color and size inspires infinite combinations for random, intricate pattern arrangement.

Product colors are Variegated, Antique and Muted Greens, Charcoal Grey, Desert Storm, Ebony and two Quartzite colors, Silver Quartzite and Autumn River. Quartzite colors sparkle with flecks of quartz crystals, adding a unique and stunning effect to any interior or exterior space. Sizes are



six inches by six inches (6" x 6"), six inches by twelve inches (6" x 12"), twelve inches by twelve inches (12" x 12") and twelve inches by eighteen inches (12" x 18"). All sizes stated include one-quarter inch (1/4") clearance for grout and setting.

Minimum Orders

International Slate & Stone is now offering value-savings with minimum orders as low as four crates for our complete line of slate roofing, flooring and landscape tiles. Please calculate your slate needs to the full load. For example, a full crate of Slate contains 360 square feet. If you need 1,500

square feet, please order five crates. Sorry, we cannot accept orders for partial crates.

To order, or for more information, contact us today at 1-810-919-1285 or visit the web site at www.internationalslateandstone.com.

GAUGED - FLOORING AND WALL CLADDING SLATES

PRODUCTS AVAILABLE IN ALL SIZES

| PRODUCT | COLOR | SPECIFICATION | PER 20' FULL CONTAINER LOAD | |
|---------|------------------|---------------|-----------------------------|--------|
| | | | SQ FT | PCS |
| 1102QX | ANTIQUE GREEN | 6"X6"X3/8" | 7,900 | 31,600 |
| 1102X | EMERALD SWIRL | 6"X12"X3/8" | 7,900 | 15,800 |
| 1102YL | MUTED GREEN | 12"X12"X3/8" | 7,900 | 7,900 |
| 1103 | CHARCOAL GREY | 12"X18"X3/8" | 7,900 | 5,920 |
| 1104C | DESERT STORM | | | |
| 1104D | VARIEGATED GREEN | | | |
| 1105 | EBONY | | | |